



Legend

- Potential Weirs for Surcharging Soils
- Trail System
7555.6 Lin. Ft.
- 1A (66.6), 1B (7.7), 1C (10.3), 1D (14.0), 1E (4.8): Dry Prairie Restoration Sand Flat Restoration*
103.4 Acres
- 2 Dense Forest (Pitch Pine)
15.8 Acres
- 4A (45.4), 4C (8.4), 4D (1.9): Forest Restoration (Pitch Pine-Scrub Oak)*
55.7 Acres
- 4B: Upland Forested Buffer Enhancement (Appalachian Oak Pine Forest)*
37.4 Acres
- 5: Biofilter Wetland (Subsurface Treatment)
3.0 Acres
- 6A: Forested Wetland Enhancement (Red Maple Hardwood Swamp)*
25.1 Acres
- 7A (2.5), 7C (7.5), 7D (4.9): Restored Forested Riparian Wetland
14.9 Acres
- 7B: Restored/Reconfigured Stream Courses
2560 Lin. Ft.
- 8A: Bog
0.7 Acres
- 8B: Sedge Meadow
0.2 Acres
- 9: Forested Wetland Restoration (Red Maple Hardwood Swamp)*
2.4 Acres
- 10: Upland Forest Recreation*
3.1 Acres

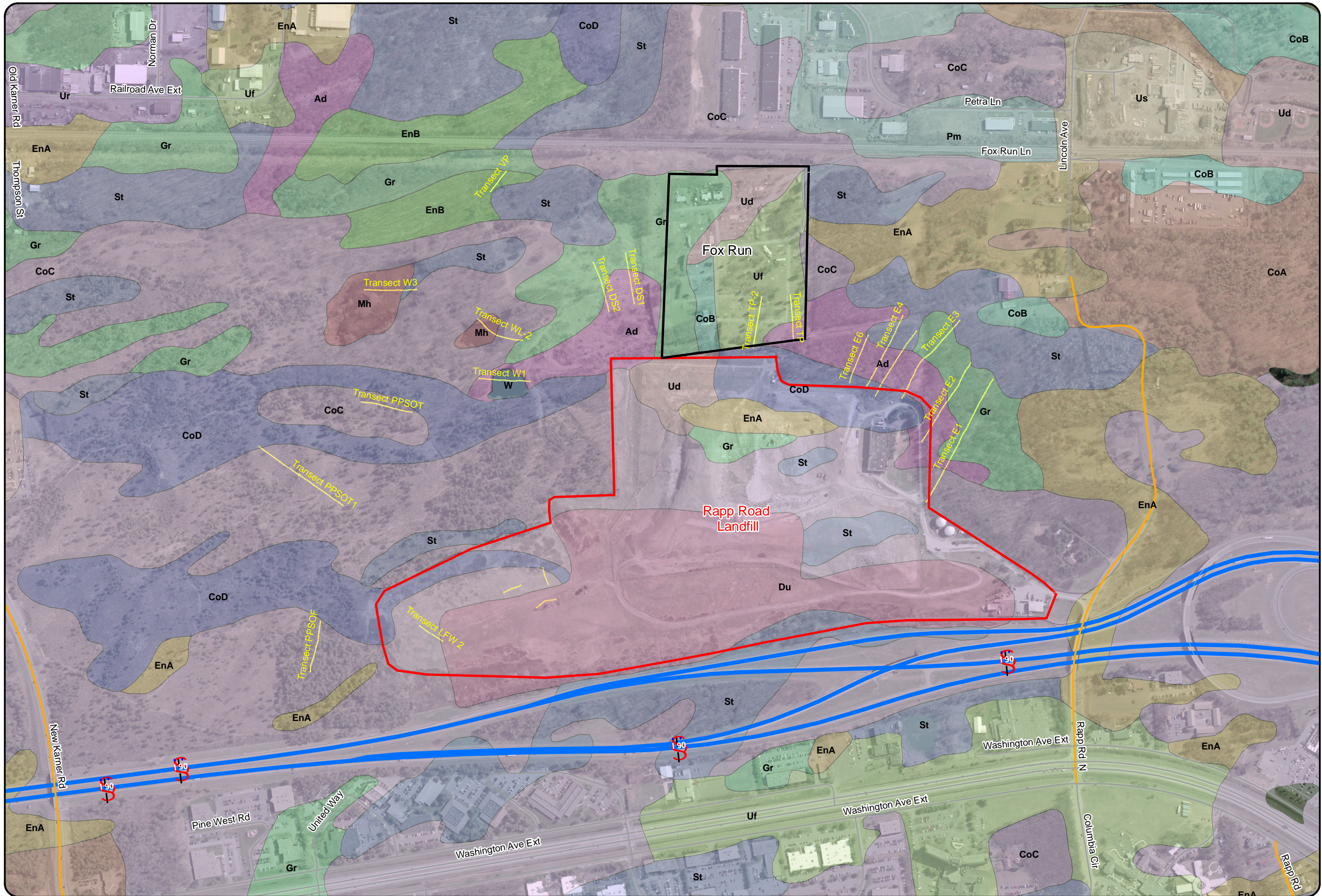
NOTE: * cover type found in barrens
 0 100' 200' 400'
 SCALE: 1"= 200'
 NORTH

Revisions:

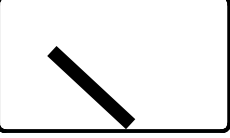
No.	By	Date	Description
1		1/22/06	Restoration Additions/Revisions
2			
3			
4			
5			
6			
7			
8			
9			

Conceptual Habitat Mitigation, Restoration & Enhancement Plan
 Drawn By: t.e.g.
 AES Project No.: 06-0590
 Checked: m.r. 1_24_07.dwg
 Approved: Date: 1-24-2007

Rapp Road Landfill
 Albany, New York
Clough Harbour & Associates, LLP
 III Winners Circle, P.O. Box 5269
 Albany, New York 12205-0269



No.	Submission / Revision	App'd	By	Date



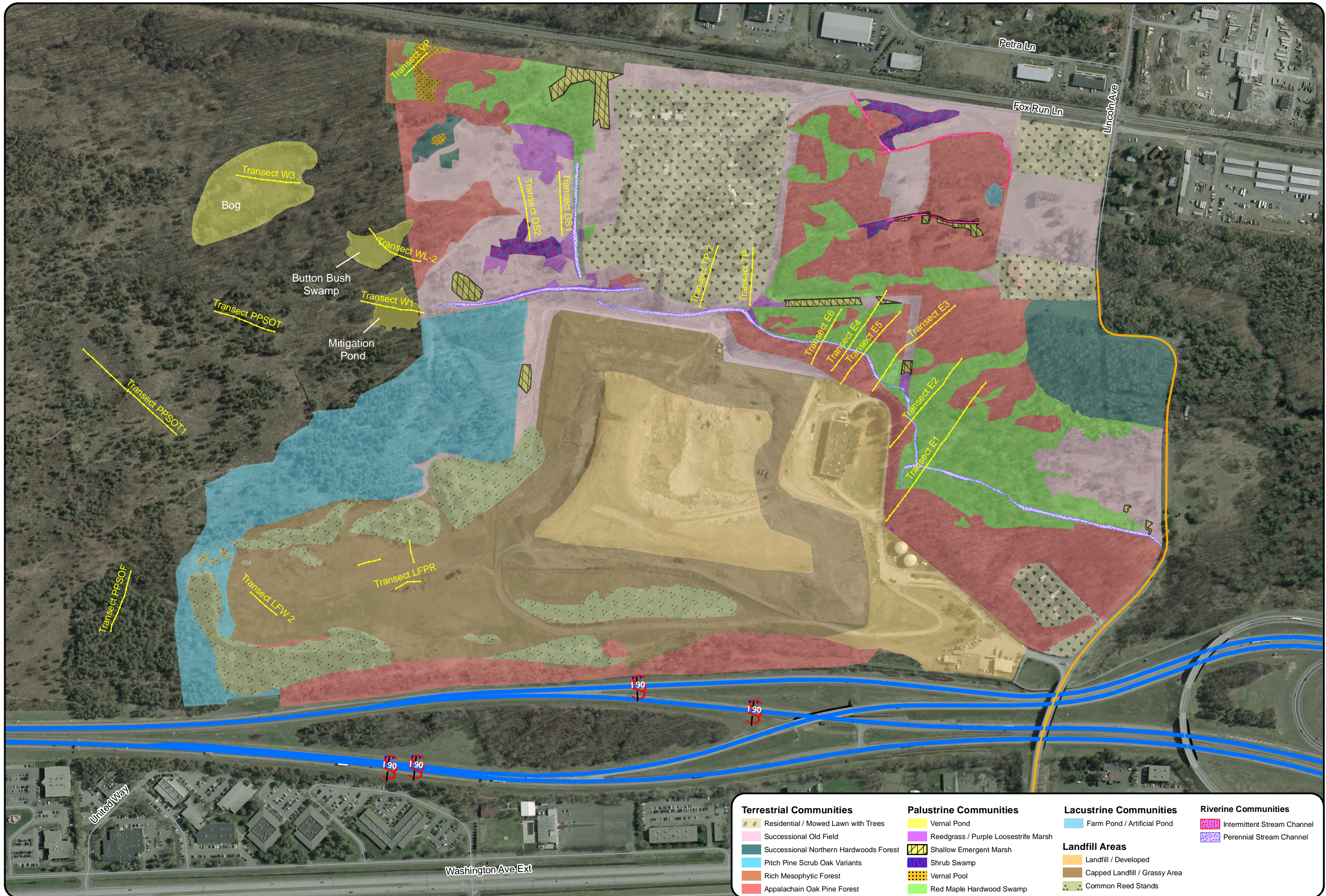
City of Albany
 Department
 of General Services
 One Connors Boulevard
 Albany, New York



 Drawing Copyright © 2007 Clough Harbour and Associates, LLP
CLOUGH HARBOUR & ASSOCIATES LLP
 111 Winners Circle, P.O. Box 5269 • Albany, NY 12205-0269
 Main: (518)453-4500 • www.cloughharbour.com

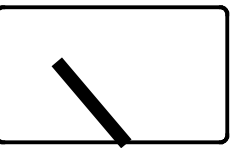
**Rapp Road Landfill
 Eastern Expansion**
Soils Map
 Issue Date: 04/07 Project Number: 12260 Scale: 1" equals 550'

Figure 3.1-4




Terrestrial Communities		Palustrine Communities		Lacustrine Communities		Riverine Communities	
#	Residential / Mowed Lawn with Trees	Yellow	Vernal Pond	Light Blue	Farm Pond / Artificial Pond	Red Dotted	Intermittent Stream Channel
Pink	Successional Old Field	Purple	Reedgrass / Purple Loosestrife Marsh	Dark Blue	Shrub Swamp	Blue Dotted	Perennial Stream Channel
Dark Green	Successional Northern Hardwoods Forest	Yellow with Hatched	Shallow Emergent Marsh	Orange	Landfill / Developed		
Light Blue	Pitch Pine Scrub Oak Variants	Blue with Dotted	Vernal Pool	Brown	Capped Landfill / Grassy Area		
Orange	Rich Mesophytic Forest	Green	Red Maple Hardwood Swamp	Light Green	Common Reed Stands		
Red	Appalachian Oak Pine Forest						

No.	Submission / Revision	App'd	By	Date



City of Albany
 Department
 of General Services
 One Connors Boulevard
 Albany, New York



 Drawing Copyright © 2007 Clough Harbour and Associates LLP
CLIA
 CLOUGH HARBOUR & ASSOCIATES LLP
 111 Winners Circle, P.O. Box 5269 • Albany, NY 12205-0269
 Main: (518) 453-4500 • www.cloughharbour.com

**Rapp Road Landfill
 Eastern Expansion**
Vegetative Communities Map
 Issue Date: 04/07 Project Number: 12260 Scale: 1" equals 450'

Figure 3.3-1



Legend: the two polygons, the red dot and the blue line all indicate the location of known blue lupine populations.
 (Map provided to CHA by NYSDEC)

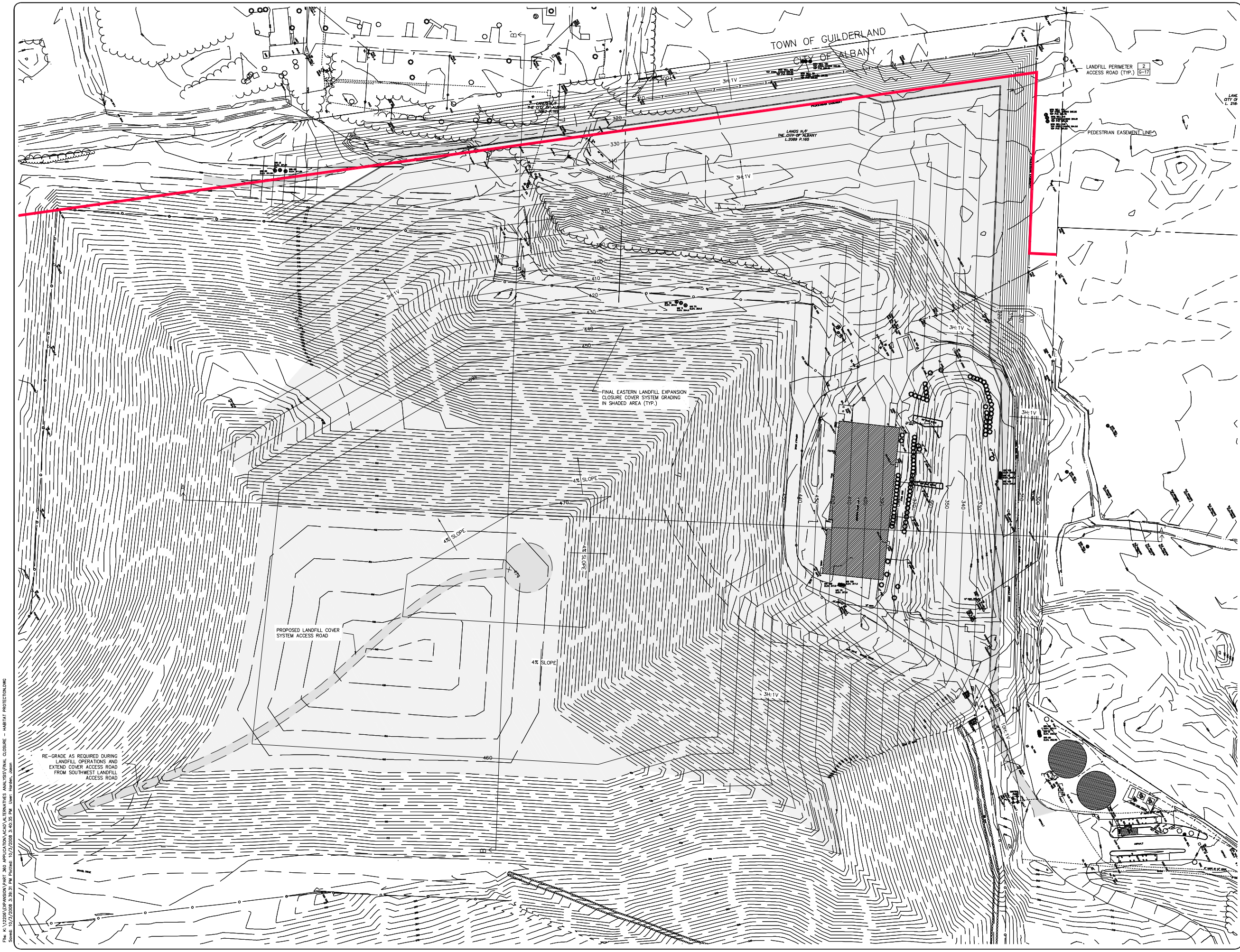


Blue Lupine Populations Map

Scale 1" = 2000'

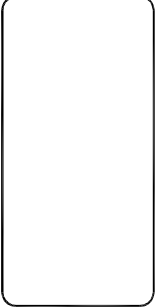
Figure 4

Albany Landfill Eastern Expansion
 Albany County, NY




File: K:\12000\DRAWINGS\PART 260 APPLICATION\ALTERNATIVES ANALYSIS\FINAL CLOSURE - HABITAT PROTECTION.DWG
 Saved: 10/2/2008, 3:39:31 PM Plotted: 10/2/2008, 3:40:35 PM User: Harold_John

Submitted / Revision	
No.	
By	
Date	



CITY OF ALBANY
 DEPARTMENT OF GENERAL SERVICES
 ONE CONNORS BOULEVARD
 ALBANY, NEW YORK 12204

UNAUTHORIZED ALTERATION OF ANY PORTION OF THIS DRAWING IS PROHIBITED BY LAW.


 CIVIL ENGINEERS
 100 West 10th St. Albany, NY 12202
 Tel: 518-487-8800 www.cia-engineers.com

Designer: DF
 Drafter: CJP
 Checker:

**RAPP ROAD LANDFILL
 EASTERN EXPANSION**
HABITAT PROTECTION SCENARIO

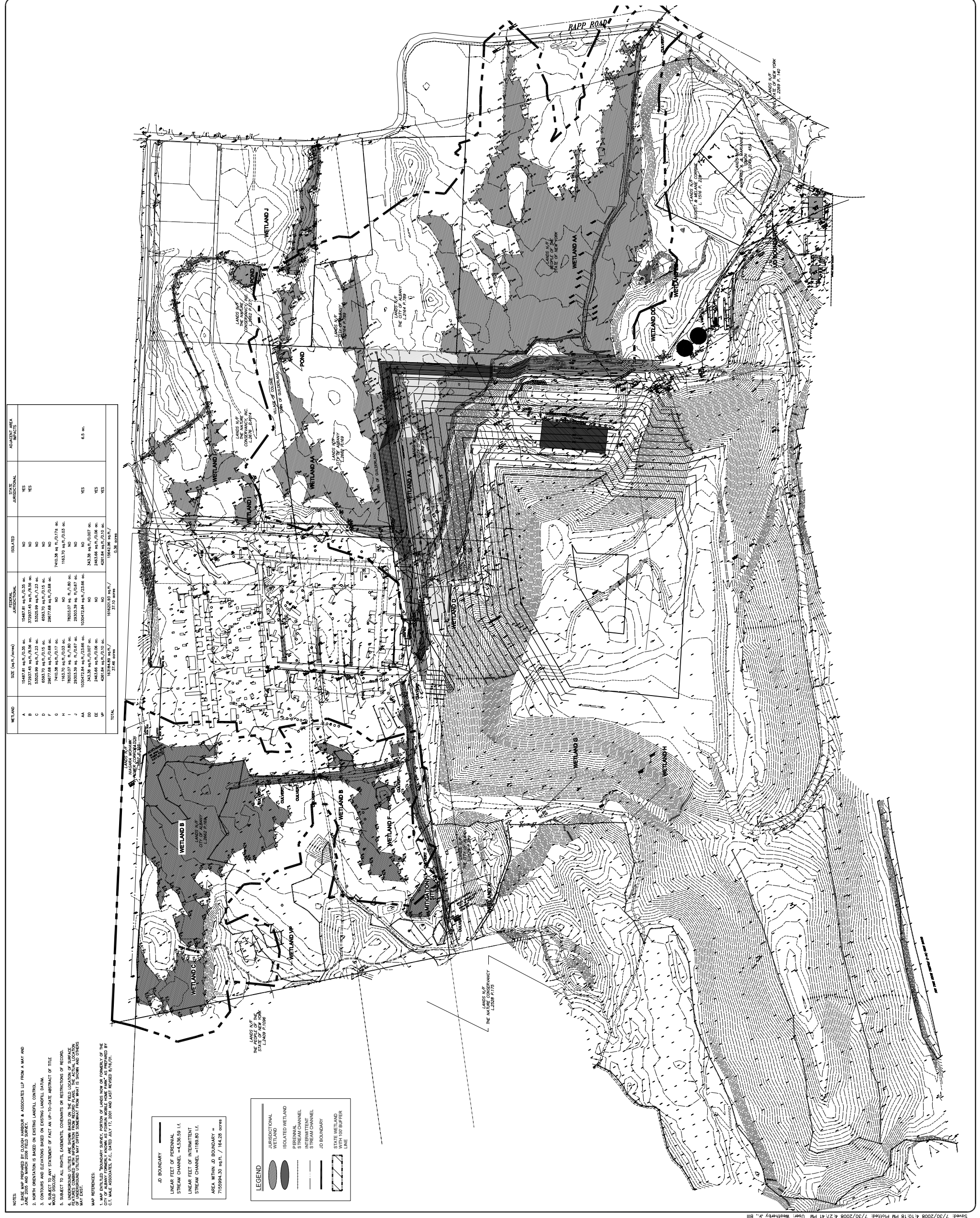
Sheet Date: 7/07
 Project No.: 12206
 Scale: 1"=40'

FIG. 2-2

ATTACHMENT A
FIGURES



Appr	By	Date
WETLAND REVISIONS		
1		
No.		
Submitted / Revised		
JMD		2/28/07



WETLAND	SIZE (sq ft/acre)	ISOLATED	ADJACENT AREA
A	15487.81 sq ft / 0.35 ac	NO	JURISDICTIONAL
B	37293.45 sq ft / 0.86 ac	NO	YES
C	53265.99 sq ft / 1.23 ac	NO	YES
D	6983.70 sq ft / 0.16 ac	NO	
E	29077.06 sq ft / 0.67 ac	NO	
F	7416.38 sq ft / 0.17 ac	NO	
G	1183.70 sq ft / 0.03 ac	NO	
H	79003.07 sq ft / 1.80 ac	NO	
J	29003.59 sq ft / 0.67 ac	NO	
K	102472.84 sq ft / 2.36 ac	NO	
L	2443.66 sq ft / 0.06 ac	NO	
M	4261.84 sq ft / 0.10 ac	NO	
N	161820.93 sq ft / 3.70 acres	NO	
O	15842.98 sq ft / 0.36 acres	NO	
P			
Q			
R			
S			
T			
U			
V			
W			
X			
Y			
Z			
TOTAL			

NOTES:

1. BASE MAP PREPARED BY CLOUGH HANBOURN & ASSOCIATES LLP FROM A MAY AND JUNE 2005 AND MARCH 2006 FIELD SURVEY.
2. NORTH ORIENTATION IS BASED ON EXISTING LABELLED CONTROL.
3. CONTOURS AND ELEVATIONS BASED ON EXISTING LABELLED DATA.
4. PROPERTY BOUNDARIES SHOWN ARE BASED ON RECORD DEEDS AND RECORDS. ANY STATEMENT OF FACT AS TO UP-TO-DATE ABSTRACTS OF TITLE WOULD BE SOLELY THAT OF THE CLIENT.
5. SUBJECT TO ALL RIGHTS, EASEMENTS, COVENANTS OR RESTRICTIONS OF RECORD.
6. UNDERGROUND UTILITIES ARE SHOWN BASED ON THE FIELD LOCATION OF SURFACE OF UNDERGROUND UTILITIES. FIELD LOCATIONS MAY DIFFER FROM WHAT IS SHOWN AND OTHERS MAY EXIST.

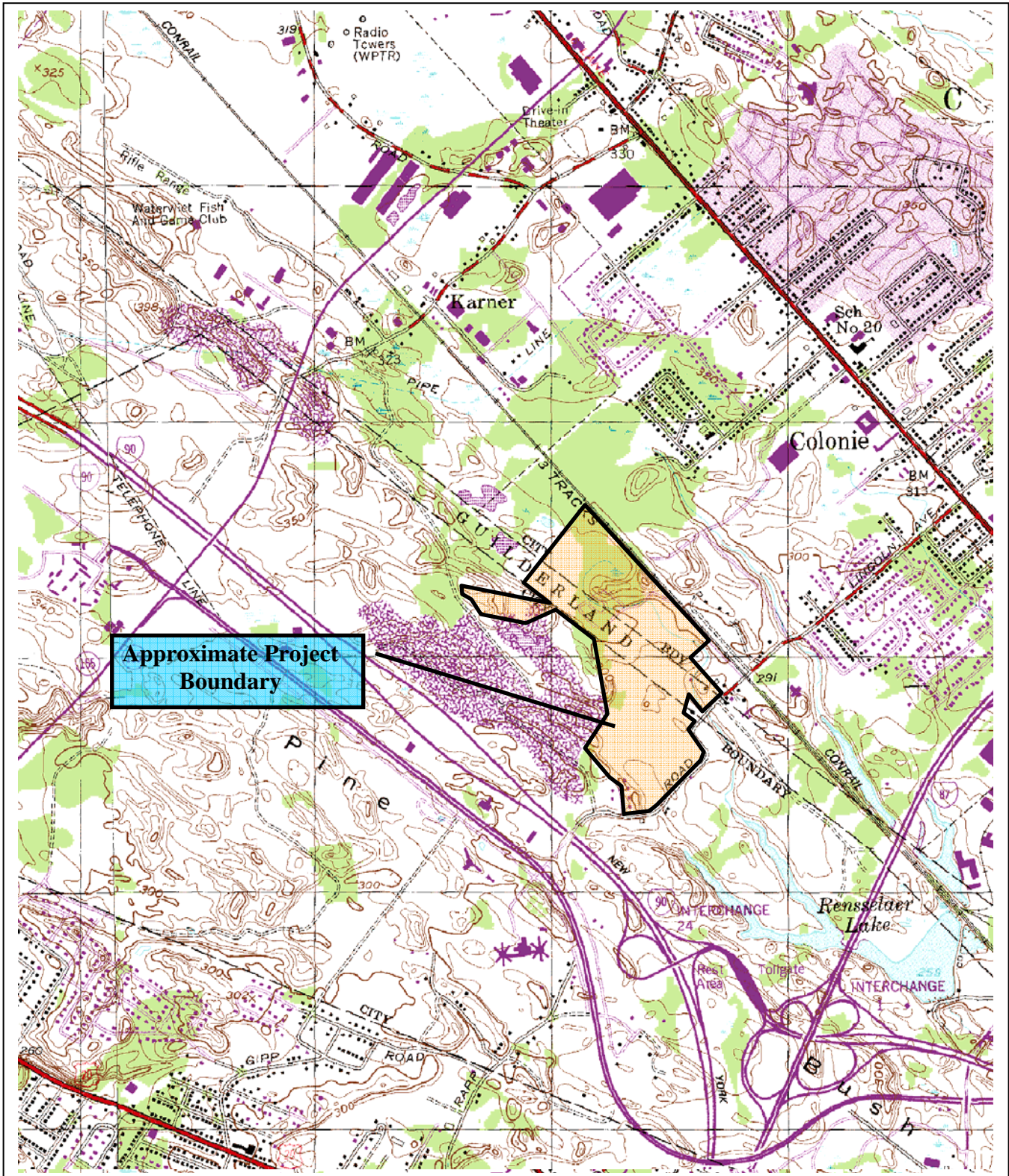
MAP REFERENCES:



1. MAP ENTITLED "BOUNDARY SURVEY, PORTION OF LANDS NOW OR FORMERLY OF THE CITY OF ALBANY, NEW YORK, AS SHOWN ON A PLAN OF THE CITY OF ALBANY, NEW YORK, DATED JULY 17, 2001 AND LATE REVISION 8/76/01, BY C.T. MALE ASSOCIATES, P.C.

JD BOUNDARY
LINEAR FEET OF PERENNIAL STREAM CHANNEL = 4,536.59 L.F.
LINEAR FEET OF INTERMITTENT STREAM CHANNEL = 1188.80 L.F.
AREA WITHIN JD BOUNDARY = 7155894.30 sq ft / 164.28 acres

LEGEND

	JURISDICTIONAL WETLAND
	ISOLATED WETLAND
	PERENNIAL STREAM CHANNEL
	INTERMITTENT STREAM CHANNEL
	JD BOUNDARY
	STATE WETLAND WITH 100' BUFFER



			Project Location Map
	Scale 1" = 2000'	Figure 1	Albany Landfill Eastern Expansion Albany County, NY